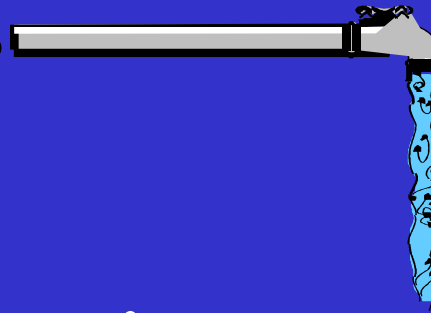


# VHS Sector

Water Supply Systems



**Emergency Services**  
*(Fire, Police, Emergency Medical)*

**Government Services**  
*(Federal, State, Local)*



**Vital Human Services Sector**

President's Commission on Critical Infrastructure Protection

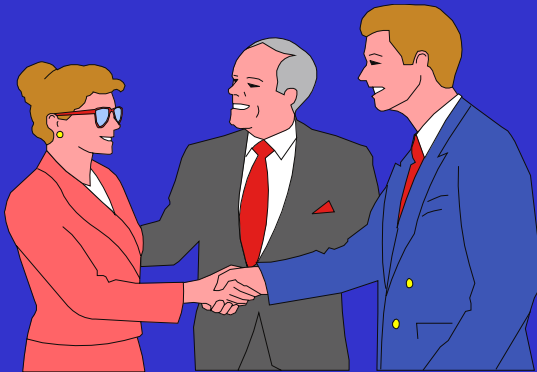


# VHS – Information Sources



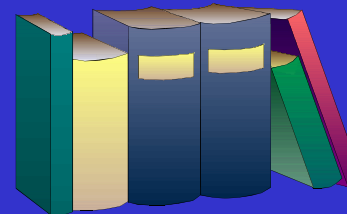
**Contracts**

**Workshops**



**Interviews /  
Site Visits**

**Literature**



**Vital Human Services Sector**

President's Commission on Critical Infrastructure Protection





# VHS – Contracts

- ◆ University of Virginia - water
- ◆ University of Michigan - water, scada, international
- ◆ Argonne National Lab - emergency service in NYC
- ◆ Argonne - Illinois Institute of Technology (IITRI) - water contamination
- ◆ International Association Fire Chiefs
- ◆ National Emergency Management Association (NEMA)



# VHS – Workshops



- ◆ APWA Hosted, PCCIP Chaired
- ◆ Five Cities:
  - Washington
  - Oakland
  - Kansas City
  - Tampa
  - Houston
- ◆ Nearby Communities
- ◆ All Sectors

**Vital Human Services Sector**

President's Commission on Critical Infrastructure Protection



# VHS – Interviews / Site Visits

## *Federal Government*

EPA    CIA    FCC  
USGS    FBI    NTIA  
DOD    C.ENG    NIST  
FEMA ...

## *Owners / Operators*

MET W.D.S.C  
Charlottesville  
San Diego W.C.  
NYC  
W.S. Participants ...

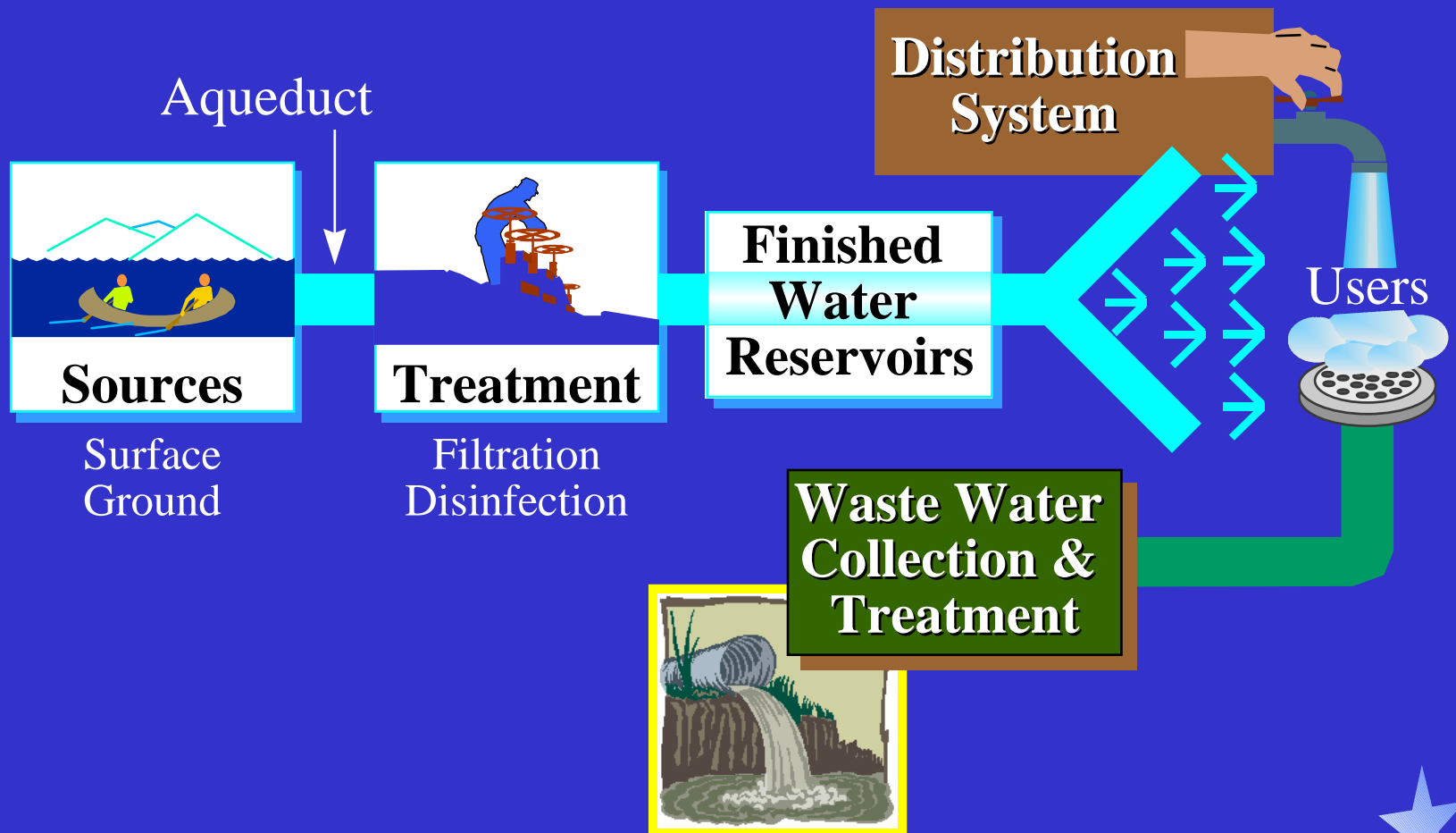
## *State & Local*

NJ    CA    FL    NYC  
MD    GA    KA    LA  
MI    MA    MO    CHI  
MN    NY    VA    BOS  
TX    DC    ...

**Vital Human Services Sector**

President's Commission on Critical Infrastructure Protection

# Water Supply System

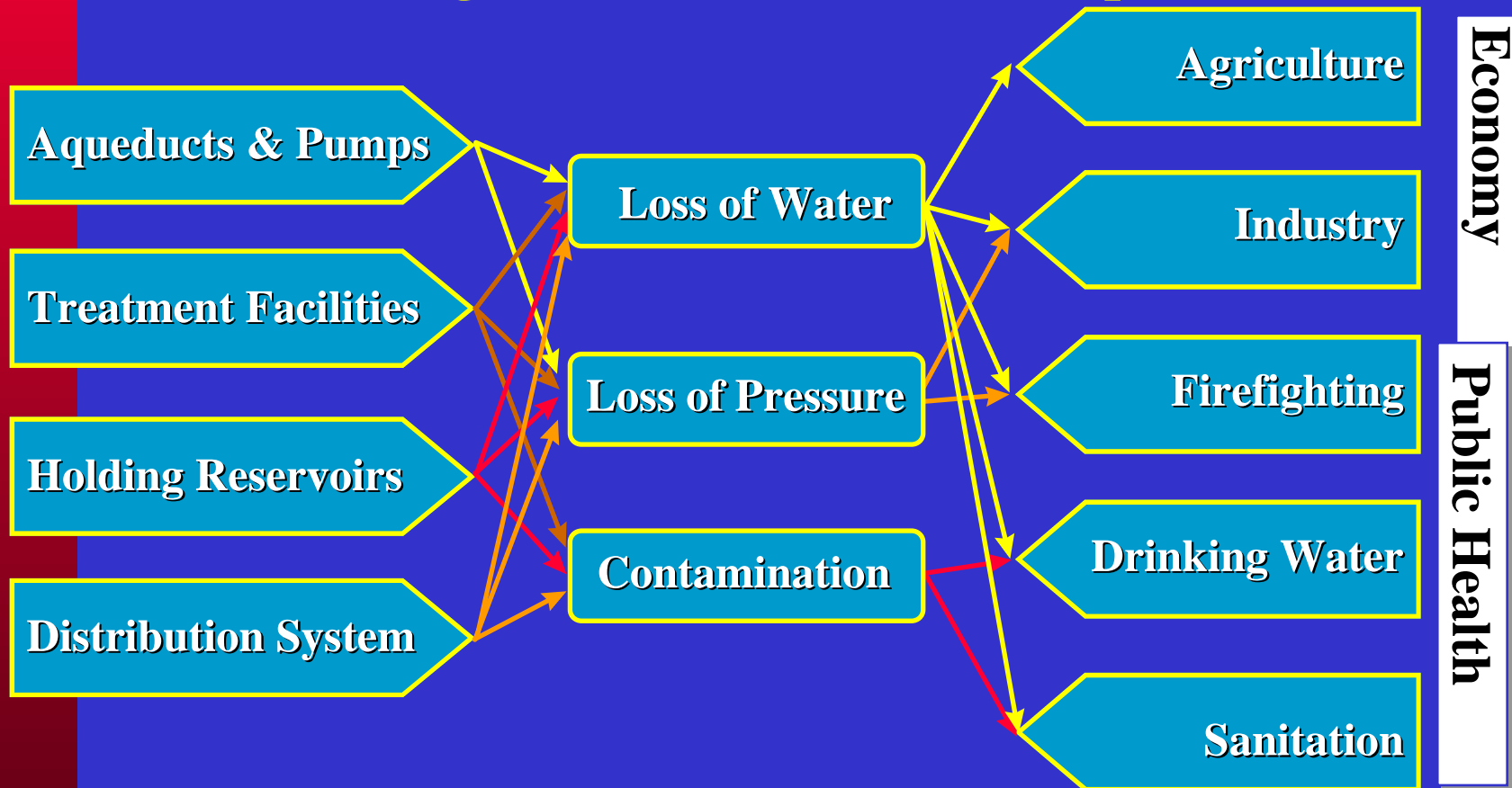


**Vital Human Services Sector**

President's Commission on Critical Infrastructure Protection

# Water Supply

Target → Effect → Impact



**Vital Human Services Sector**



# Water Supply Systems

## *Major vulnerability*

- ◆ Contamination — chemical, biological

## *Actions*

- ◆ R&D program — federal and industry
- ◆ Enhanced security programs



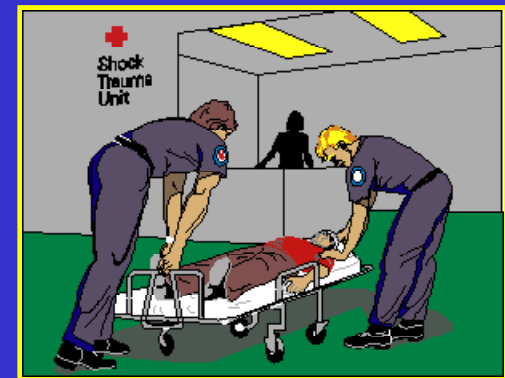


# Emergency Services

**POLICE**



**EMERGENCY MEDICAL**



**FIRE**

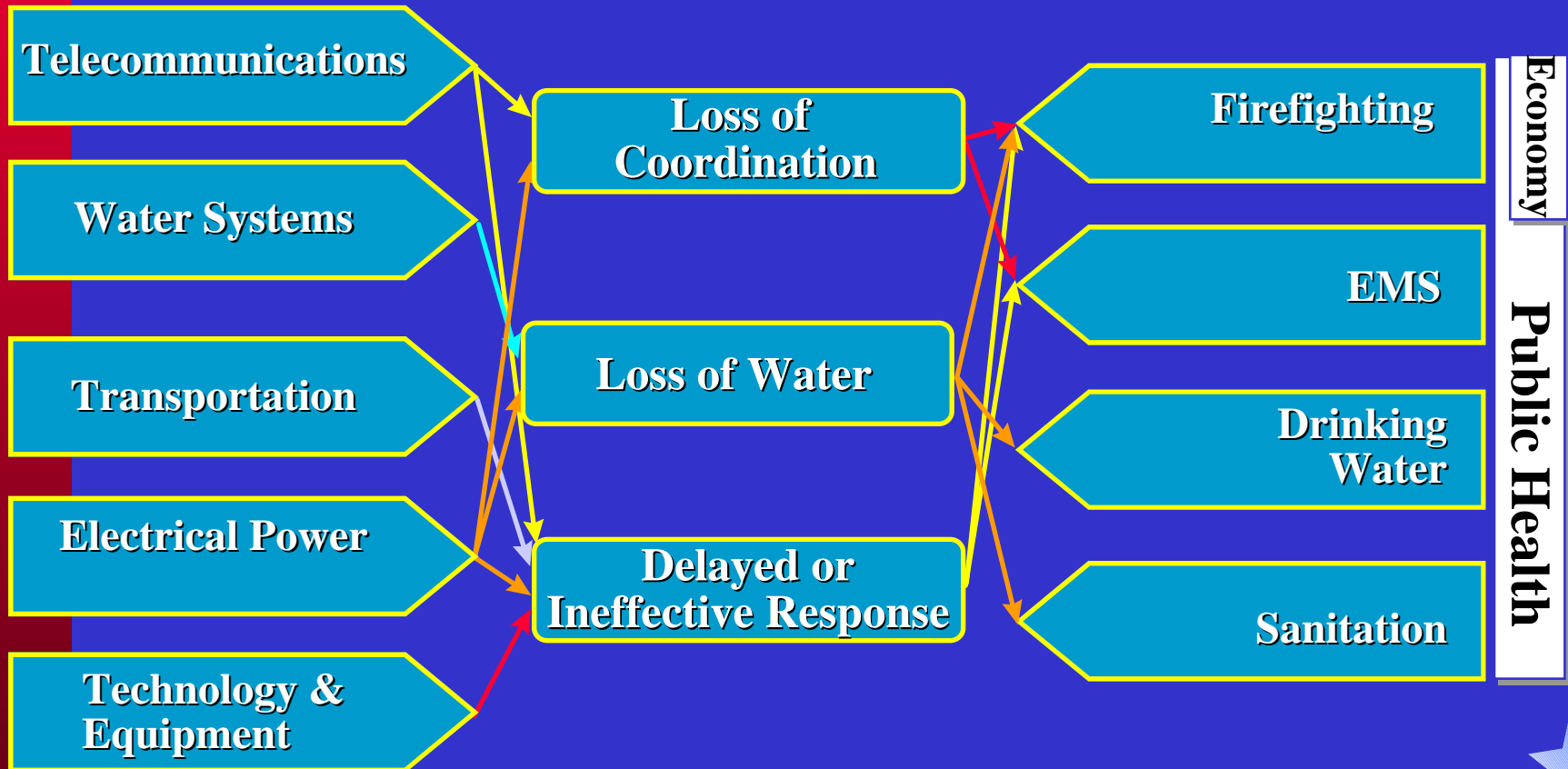
**Vital Human Services Sector**

President's Commission on Critical Infrastructure Protection



# Emergency Services

Target → Effect → Impact



**Vital Human Services Sector**



# Emergency Services

## *Major vulnerabilities*

- ◆ Chem / bio incidents
- ◆ Communications

## *Actions*

- ◆ Training, equipment, coordination
- ◆ Support Public Service Wireless Advisory Committee, National Public Service Telecommunications Committee, etc.
- ◆ National Telecommunication and Information Administration to represent state and local interests

---

**Vital Human Services Sector**



# Government Services

- ◆ National Weather Service
- ◆ Immigration & Naturalization Service
- ◆ Centers for Disease Control
- ◆ Social Security
- ◆ Public Health Service
- ◆ State & Local Payments Services
- ◆ Public Works

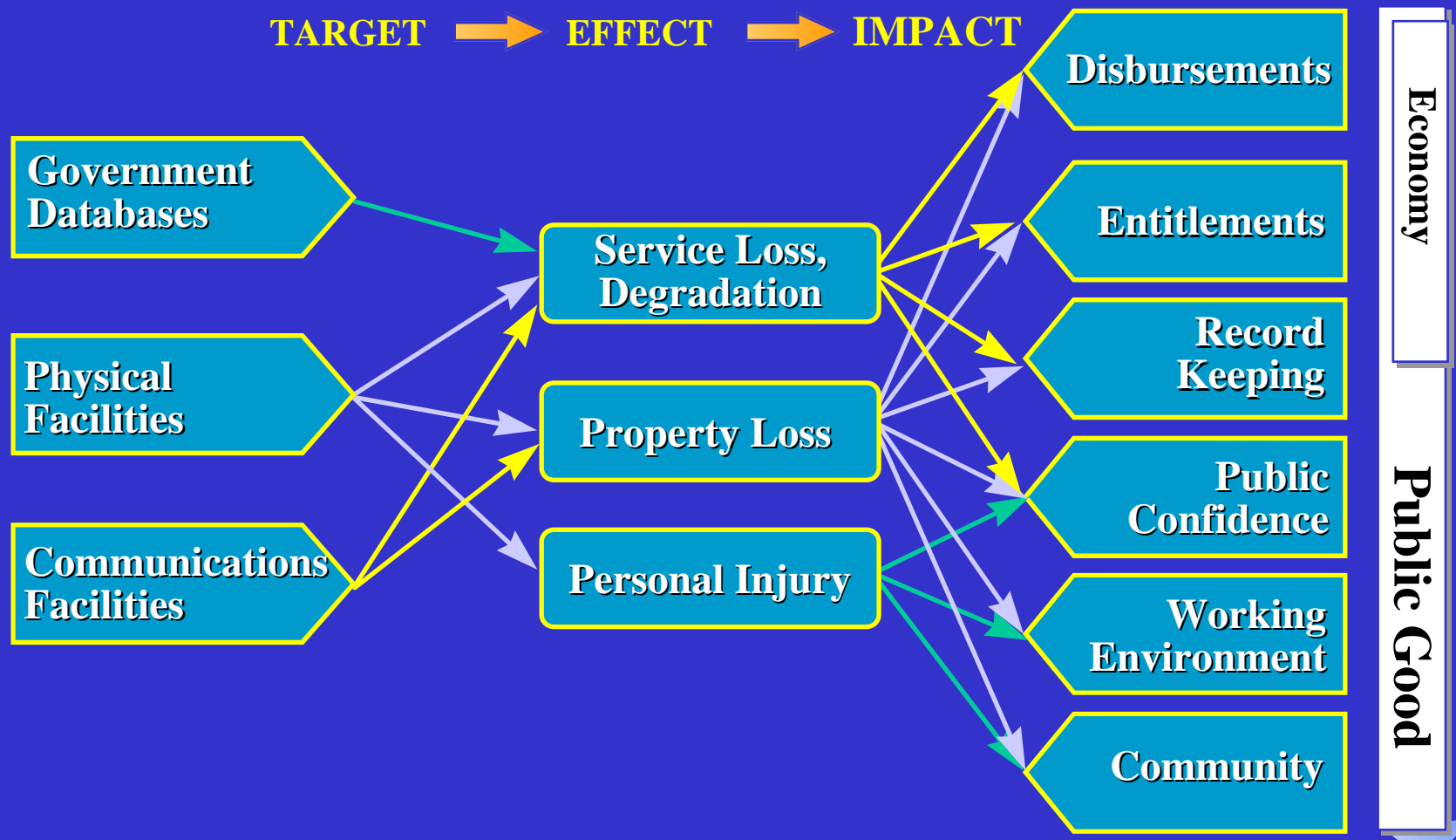
---

**Vital Human Services Sector**

President's Commission on Critical Infrastructure Protection



# Government Services



## Vital Human Services Sector



# Government Services

## *Major vulnerabilities*

- ◆ Computer & information security

## *Actions*

- ◆ Strengthen policy, technical assistance, enforcement

